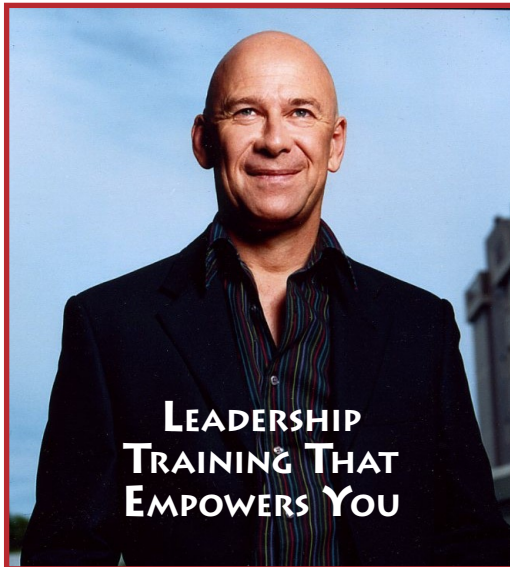




[www.stevematthews.com.au](http://www.stevematthews.com.au)

# THE PERFORMANCE OF LEADERSHIP

WITH STEVE MATTHEWS



For more information contact Steve on  
0409 039 159 or  
email [steve@stevematthews.com.au](mailto:steve@stevematthews.com.au)  
[www.stevematthews.com.au](http://www.stevematthews.com.au)

'Steve brings an outstanding set of frameworks with which he illuminates peoples perceptions and behaviours. These have changed the way I understand the world around me and through that, my ability to coach and lead my colleagues.'

Simon Smith, MD, eBay Australia



As a leader, you are constantly in the spotlight and required to 'perform' your role, which has many aspects (manager, coach, communicator, listener, visionary, presenter, motivator, negotiator), with confidence, skill and clarity.

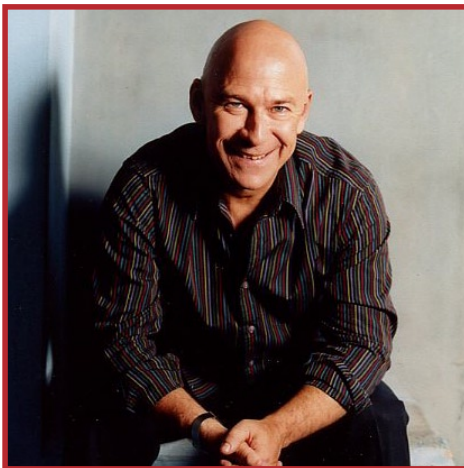
This custom designed one or two day workshop will focus on your 'performance power' and how this manifests in the workplace, whether you are conducting a meeting, communicating your vision, coaching your team, giving feedback or any other situation that requires you to make an impact.

Drawing on current knowledge of leadership, coaching, psychology and communication, combined with the skills and techniques of actors, the workshop will give you an opportunity to develop your confidence and ability as a leader to project your 'presence' and to communicate your message with clarity, authenticity and inspiration.

Building on your current strengths as a leader, the experiential techniques and exercises of the workshop will allow you to extend your repertoire of leadership roles and challenges, as well as provide you with valuable feedback to take your 'performance' as a leader to the next level.

During the workshop, participants can expect to take an active part in practical sessions involving improvisation, role-play, spontaneity, voice and body work, building rapport, developing presence, timing, preparation, giving feedback, coaching, the inner and outer game, communicating a vision.

The workshop facilitator, Steve Matthews, is passionate about developing a new style of expressive, consultative and inspirational leadership, which acknowledges the need for leaders to become exceptional performers, communicators and designers of new possibilities.



Over the past 25 years, Steve has worked extensively as a Consultant in Leadership, Executive Coach, Lecturer in Acting, Actor and Director.

His clients include NIDA, Actors Centre Australia, University of NSW, AMP, Bluescope Steel, Citibank, Channel Seven, Qantas, KPMG, Australian Government, RTA, NSW Health, The Human Enterprise.

**‘Steve – you are an inspirational and gifted facilitator, sensitive to both group and individual needs, keeping us on track so we reached our desired outcome.’**

Zed Elliott, Director, Patterson Partners



**If you are interested in offering this workshop to leaders and managers in your organisation, or require more information, you are welcome to call Steve on 0409 039 159 or email [steve@stevematthews.com.au](mailto:steve@stevematthews.com.au)**



[www.stevematthews.com.au](http://www.stevematthews.com.au)

**‘In lightning speed, Steve is able to focus on what a person needs to take them to the next level. He is a skilful, masterful trainer and director.’**

Paul Mitchell, MD, The Human Enterprise